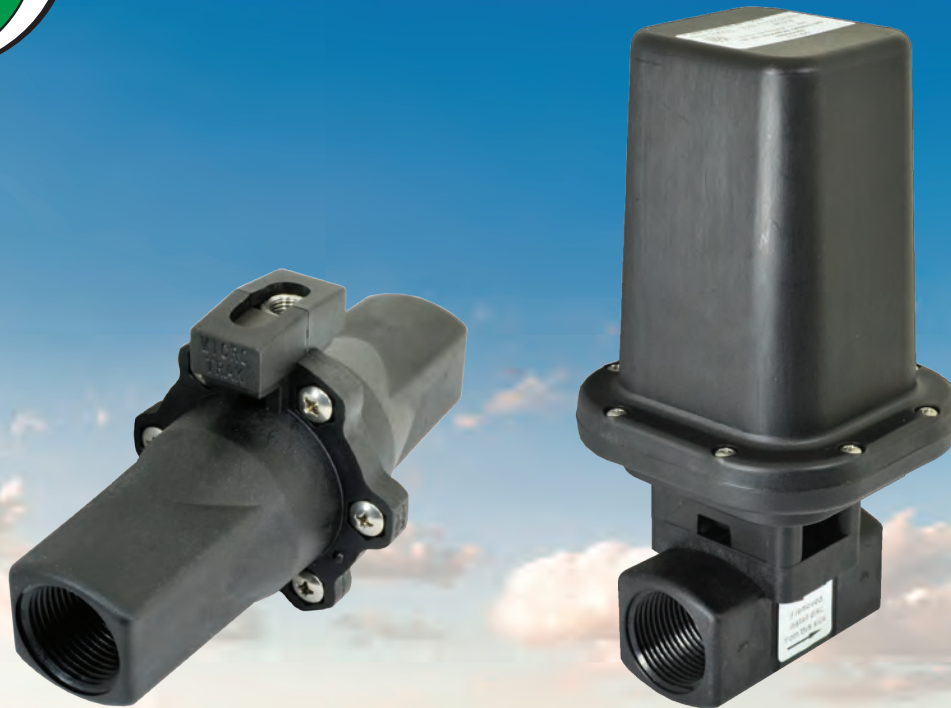




# FLOWMETERS & SERVO VALVES



## BUILT TOUGH, DESIGNED FOR ACCURACY

### **Turbine Flowmeters:**

- Simple, Rugged, and Dependable
- Unique two-direction flow design - 2X working life

### **Magnetic Flowmeters:**

- No moving parts
- Unaffected by fluid viscosity and density
- State-of-the-art accuracy

### **Servo Valves:**

- Designed for responsive & precise control
- Fast acting & reliable

# TURBINE FLOWMETERS

Our turbine flowmeters combine fast, accurate flow readings with rugged, dependable quality. Unique two-direction flow design — simply flip the flowmeter around to double its working life — flow measurements are very accurate from either direction. (Does not apply to FM2000 and FM3000).

- Connect our wide range of flowmeters to any major-brand control system to enjoy superior performance and maximum accuracy.
- Smart value for your equipment budget - up to 2X the working life compared to other brands.
- Work with confidence as a Micro-Trak flowmeter precisely monitors flow of valuable liquids and NH3.
- An ideal choice for liquid application; several stainless-steel models are also NH3 compatible.

## FM250 P

1/4" BSP  
w/ 1/2" hosebarb  
.08-1.6 GPM  
290 PSI Max.



## FM500

1/2" FPT  
.5-5 GPM  
500 PSI Max.



## FM750 LF GFN

3/4" FPT  
.5-12 GPM  
150 PSI Max.



## FM750 GFN

3/4" FPT  
2-40 GPM  
150 PSI Max.



## FM750 LF SS

3/4" FPT  
1-9 GPM  
500 PSI Max.



## FM750 SS

3/4" FPT  
2-40 GPM  
500 PSI Max.



## FM1000 SS

1" FPT  
3.5-70 GPM  
500 PSI Max.



## FM1500 LF SS

1 1/2" FPT  
3.5-70 GPM  
500 PSI Max.



## FM1500 SS

1 1/2" FPT  
10-130 GPM  
500 PSI Max.



## FM270 LF

2" flange (M200)  
.5-15 GPM  
175 PSI Max.



## FM270

2" flange (M200)  
3.5-70 GPM  
175 PSI Max.



## FM10-100

2" flange (M200)  
10-100 GPM  
175 PSI Max.



## FM2000 P

2" flange (M200)  
19-198 GPM  
285 PSI Max.



## FM3000 P

3" MPT  
40-396 GPM  
285 PSI Max.



(All pressure ratings @ 70°F)

# MAGNETIC FLOWMETERS



shown:  
**MM53**  
1" FPT  
2.6-53 GPM  
290 PSI Max.

- No internal moving parts
- Unaffected by fluid viscosity and density
- Highly accurate
- Saves time and money; very low maintenance

## MODEL - FLOW RANGE - SIZE:

**MM2** - .08 to 1.6 gpm, 3/4" FPT  
**MM3** - .13 to 2.6 gpm, 3/4" FPT  
**MM5** - .3 to 5 gpm, 3/4" FPT  
**MM13** - .6 to 13 gpm, 3/4" FPT  
**MM26** - 1.3 to 26 gpm, 1" FPT  
**MM53** - 2.6 to 53 gpm, 1" FPT  
**MM106** - 5 to 106 gpm, 1 1/2" FPT  
**MM106FL** - 5 to 106 gpm, M220 flange  
**MM158** - 8 to 158 gpm, 2" MPT  
**MM238** - 12 to 238 gpm, 2" MPT  
(All models max. pressure rated to 290 psi @ 70°F)

# SERVO VALVES

Superior quality, fast-acting servo valves — ideally suited for responsive rate changes, and accurate section control.

## Flanged Servo

12VDC  
2" Flange (M200) or  
1 1/2" FPT



## Threaded Servo

12VDC  
1" FPT



9 servo valve models to fit your flow control needs including high-pressure (300 psi) and NH3 ready versions.